

# **Formal Public Meeting for MaineDOT Ferry Terminal Modifications**

## **Vinalhaven Ferry Terminal WIN: 023823.00**

Presented By:

Aurele Gorneau II, MaineDOT Project Manager

Craig Morin, HNTB Project Manager

January 29, 2019





# Agenda

- Introductions
- Project Location
- Purpose & Need
- Existing Conditions
- Proposed Work
- Program Cost
- Anticipated Schedule
- Open Forum/Discussion





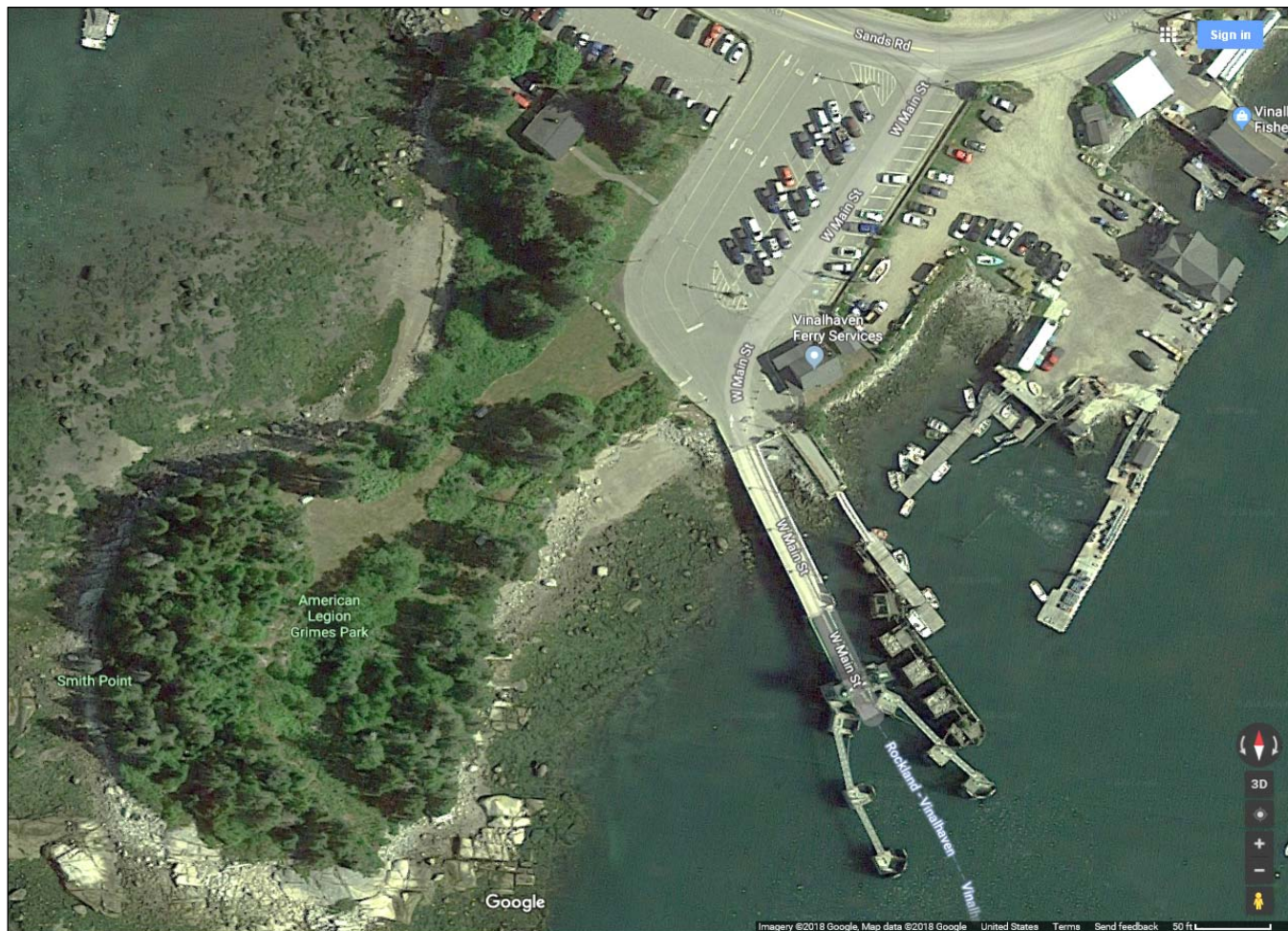
# Project Location



**Vinalhaven Ferry  
Terminal**



# Project Location



**Vinalhaven Ferry  
Terminal**



# Purpose & Need

## **Project History:**

- The terminal is currently experiencing an increase in ridership which has triggered the design and construction of a new larger ferry vessel. The new vessel will exceed the spatial capacity of the existing pen, hence requiring the addition of turning dolphins and other miscellaneous modifications.

## **Purpose & Need:**

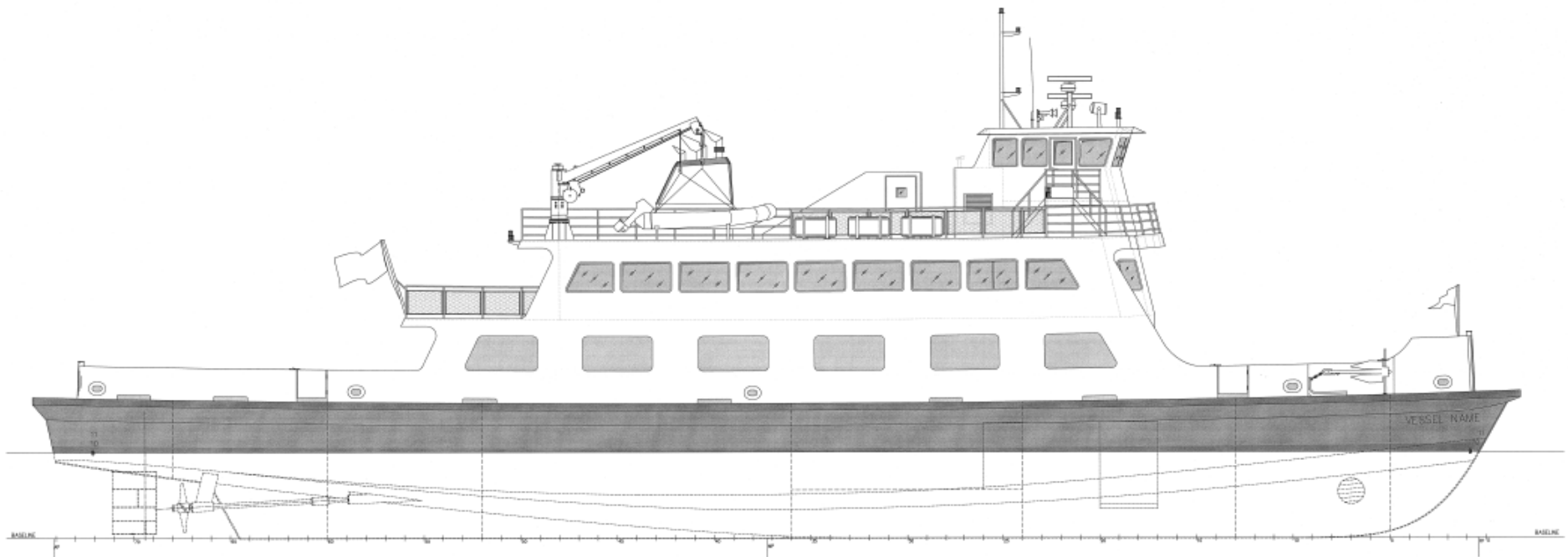
- The purpose of the project is to modify and expand upon the existing fender system at the ferry terminal to accommodate a new larger ferry vessel commencing service in 2019.
- The proposed project is needed due to the increased demand of the ferry service, which has resulted in the need for a new, larger ferry vessel. The current ferry terminal fender system is insufficient to accommodate the new ferry.



# Purpose & Need

## New Ferry Vessel

State of Maine Department of Transportation  
154 Foot LOA Passenger Vehicle Ferry  
WIN 018376.10 Federal Project No. 1837610



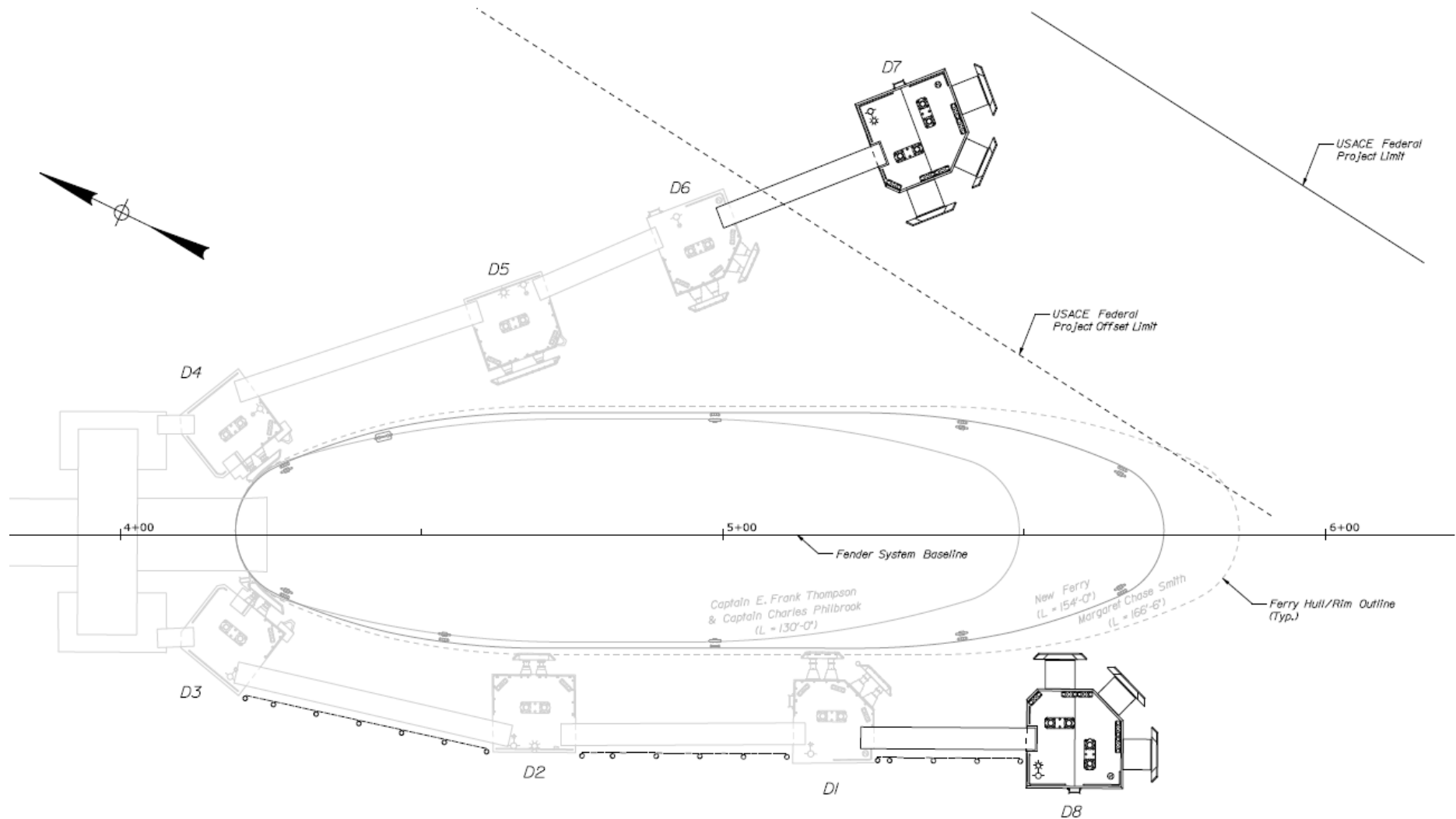
### PRINCIPAL CHARACTERISTICS

LENGTH BET. PERP.	147'-6"
LENGTH ON DECK	154'-0"
MOLDED BEAM	38'-0"
MOLDED DEPTH	14'-6"
MOLDED DRAFT @DWL	9'-3"
NUMBER OF PASSENGERS	250
APPLICABLE USCG REG	SUBCHAPTER K



# Purpose & Need

## New Ferry Vessel in Pen





# Existing Conditions



## Condition Summary:

- Dolphins, fender panels and gangways are in satisfactory condition.
- Fender panels at head dolphin extend toward vessel and result in occasional impacts.
- Pen is of insufficient size for the new ferry vessel scheduled to commence service in 2019/2020.





# Existing Conditions



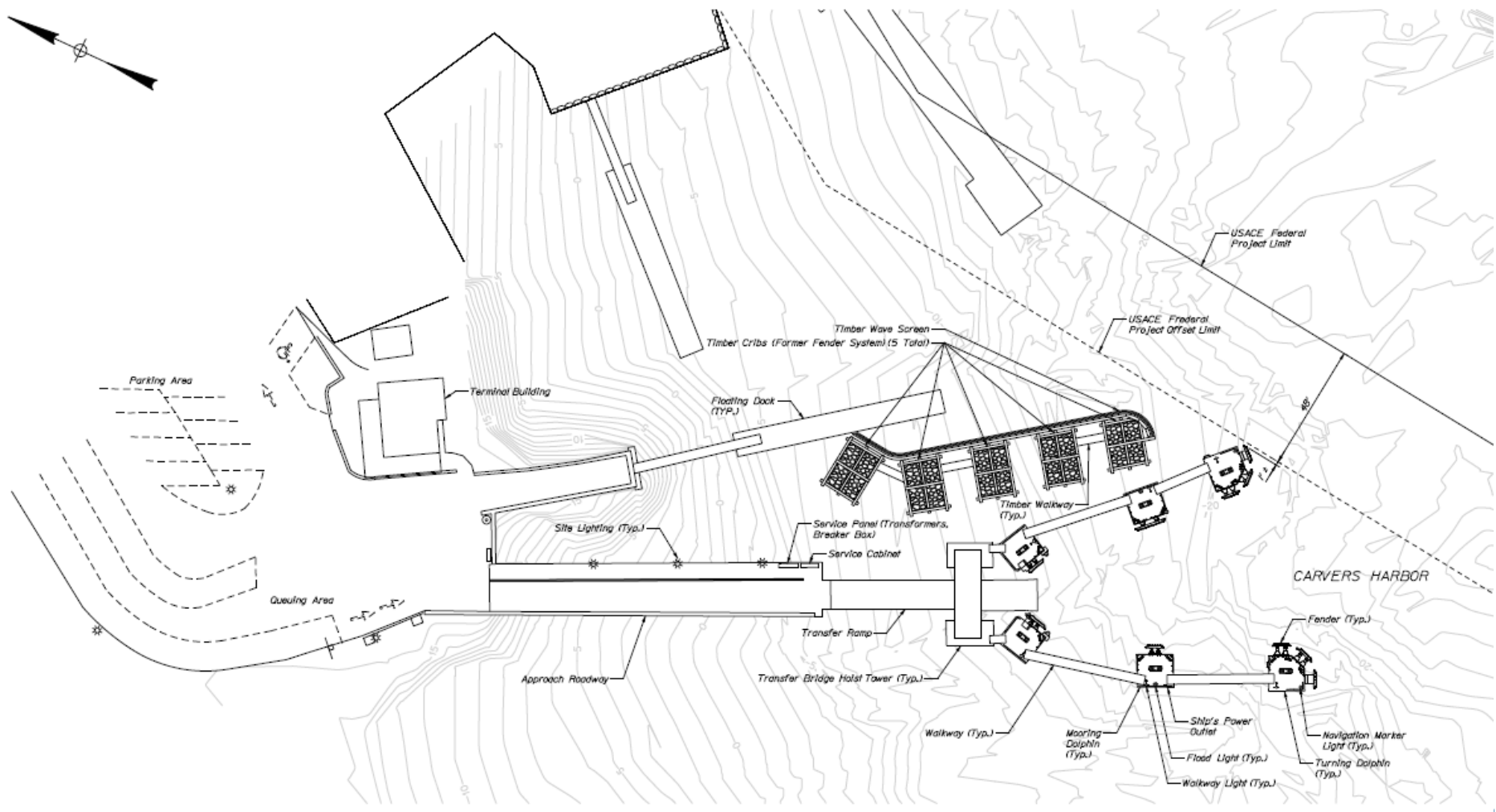
## Vessel Contact at Ramp:

- Fender panels at head dolphin extend toward vessel and result in occasional impacts.





## Existing Conditions





# Proposed Work

## **Brief Summary of Proposed Scope of Work:**

The scope of work will include a wide range of modifications and at the Vinalhaven ferry terminal including: turning dolphins, wave screens, walkways, electrical lighting, and miscellaneous elements.

Specifically, at the Vinalhaven Ferry Terminal, the following design elements will include:

- Addition of two turning dolphins;
- Addition of a wave screen between the dolphins on the west side;
- Addition of gangways to the two new turning dolphins;
- Modifications to the existing lighting to provide light at new dolphins; and
- Modifications to the existing fender panels at the head dolphins to prevent bow impact to the ramp.



Existing Stone-Filled Timber Crib (Typ.)

Existing Wave Screen (Typ.)

Existing Walkway (Typ.)

Existing Floating Dock

Remove, modify, and reset handrail

Existing Dolphin (Typ.)

Replace (1) top dolphin pad eye and Replace (1) top chain tensioner

Replace (2) top elastic fenders

Modify fender systems (See Sheet S08)

Existing Walkway (Typ.)

Existing Transfer Bridge Hoist Tower (Typ.)

Existing Transfer Ramp

Install wave screen (Typ.)

Remove and replace site light (Typ.)

Remove and store steel fender panel, rubber buckling fenders, and chains

Remove (line guard (Typ.)

Remove, store, and reset navigation marker light

Remove, modify, and reset handrail

Install aluminum gangway, electrical conduits, and junction boxes

Remove and store steel fender panel, rubber buckling fenders, and chains

Install turning dolphin, with fender panels, double bits, checks, light fixtures, ladder, and handrails

USACE Federal Project Limit

USACE Federal Project Offset Limit

CARVERS HARBOR

Fender System Baseline (See Note 9)

Offset 5'-0"

Offset 10'-0"

Offset 15'-0"

Offset 20'-0"

Offset 25'-0"

Offset 30'-0"

Offset 35'-0"

Offset 40'-0"

Offset 45'-0"

Offset 50'-0"

Offset 55'-0"

Offset 60'-0"

Offset 65'-0"

Offset 70'-0"

Offset 75'-0"

Offset 80'-0"

Offset 85'-0"

Offset 90'-0"

Offset 95'-0"

Offset 100'-0"

Offset 105'-0"

Offset 110'-0"

Offset 115'-0"

Offset 120'-0"

Offset 125'-0"

Offset 130'-0"

Offset 135'-0"

Offset 140'-0"

Offset 145'-0"

Offset 150'-0"

Offset 155'-0"

Offset 160'-0"

Offset 165'-0"

Offset 170'-0"

Offset 175'-0"

Offset 180'-0"

Offset 185'-0"

Offset 190'-0"

Offset 195'-0"

Offset 200'-0"

Offset 205'-0"

Offset 210'-0"

Offset 215'-0"

Offset 220'-0"

Offset 225'-0"

Offset 230'-0"

Offset 235'-0"

Offset 240'-0"

Offset 245'-0"

Offset 250'-0"

Offset 255'-0"

Offset 260'-0"

Offset 265'-0"

Offset 270'-0"

Offset 275'-0"

Offset 280'-0"

Offset 285'-0"

Offset 290'-0"

Offset 295'-0"

Offset 300'-0"

Offset 305'-0"

Offset 310'-0"

Offset 315'-0"

Offset 320'-0"

Offset 325'-0"

Offset 330'-0"

Offset 335'-0"

Offset 340'-0"

Offset 345'-0"

Offset 350'-0"

Offset 355'-0"

Offset 360'-0"

Offset 365'-0"

Offset 370'-0"

Offset 375'-0"

Offset 380'-0"

Offset 385'-0"

Offset 390'-0"

Offset 395'-0"

Offset 400'-0"

Offset 405'-0"

Offset 410'-0"

Offset 415'-0"

Offset 420'-0"

Offset 425'-0"

Offset 430'-0"

Offset 435'-0"

Offset 440'-0"

Offset 445'-0"

Offset 450'-0"

Offset 455'-0"

Offset 460'-0"

Offset 465'-0"

Offset 470'-0"

Offset 475'-0"

Offset 480'-0"

Offset 485'-0"

Offset 490'-0"

Offset 495'-0"

Offset 500'-0"

Offset 505'-0"

Offset 510'-0"

Offset 515'-0"

Offset 520'-0"

Offset 525'-0"

Offset 530'-0"

Offset 535'-0"

Offset 540'-0"

Offset 545'-0"

Offset 550'-0"

Offset 555'-0"

Offset 560'-0"

Offset 565'-0"

Offset 570'-0"

Offset 575'-0"

Offset 580'-0"

Offset 585'-0"

Offset 590'-0"

Offset 595'-0"

Offset 600'-0"

Offset 605'-0"

Offset 610'-0"

Offset 615'-0"

Offset 620'-0"

Offset 625'-0"

Offset 630'-0"

Offset 635'-0"

Offset 640'-0"

Offset 645'-0"

Offset 650'-0"

Offset 655'-0"

Offset 660'-0"

Offset 665'-0"

Offset 670'-0"

Offset 675'-0"

Offset 680'-0"

Offset 685'-0"

Offset 690'-0"

Offset 695'-0"

Offset 700'-0"

Offset 705'-0"

Offset 710'-0"

Offset 715'-0"

Offset 720'-0"

Offset 725'-0"

Offset 730'-0"

Offset 735'-0"

Offset 740'-0"

Offset 745'-0"

Offset 750'-0"

Offset 755'-0"

Offset 760'-0"

Offset 765'-0"

Offset 770'-0"

Offset 775'-0"

Offset 780'-0"

Offset 785'-0"

Offset 790'-0"

Offset 795'-0"

Offset 800'-0"

Offset 805'-0"

Offset 810'-0"

Offset 815'-0"

Offset 820'-0"

Offset 825'-0"

Offset 830'-0"

Offset 835'-0"

Offset 840'-0"

Offset 845'-0"

Offset 850'-0"

Offset 855'-0"

Offset 860'-0"

Offset 865'-0"

Offset 870'-0"

Offset 875'-0"

Offset 880'-0"

Offset 885'-0"

Offset 890'-0"

Offset 895'-0"

Offset 900'-0"

Offset 905'-0"

Offset 910'-0"

Offset 915'-0"

Offset 920'-0"

Offset 925'-0"

Offset 930'-0"

Offset 935'-0"

Offset 940'-0"

Offset 945'-0"

Offset 950'-0"

Offset 955'-0"

Offset 960'-0"

Offset 965'-0"

Offset 970'-0"

Offset 975'-0"

Offset 980'-0"

Offset 985'-0"

Offset 990'-0"

Offset 995'-0"

Offset 1000'-0"

Offset 1005'-0"

Offset 1010'-0"

Offset 1015'-0"

Offset 1020'-0"

Offset 1025'-0"

Offset 1030'-0"

Offset 1035'-0"

Offset 1040'-0"

Offset 1045'-0"

Offset 1050'-0"

Offset 1055'-0"

Offset 1060'-0"

Offset 1065'-0"

Offset 1070'-0"

Offset 1075'-0"

Offset 1080'-0"

Offset 1085'-0"

Offset 1090'-0"

Offset 1095'-0"

Offset 1100'-0"

Offset 1105'-0"

Offset 1110'-0"

Offset 1115'-0"

Offset 1120'-0"

Offset 1125'-0"

Offset 1130'-0"

Offset 1135'-0"

Offset 1140'-0"

Offset 1145'-0"

Offset 1150'-0"

Offset 1155'-0"

Offset 1160'-0"

Offset 1165'-0"

Offset 1170'-0"

Offset 1175'-0"

Offset 1180'-0"

Offset 1185'-0"

Offset 1190'-0"

Offset 1195'-0"

Offset 1200'-0"

Offset 1205'-0"

Offset 1210'-0"

Offset 1215'-0"

Offset 1220'-0"

Offset 1225'-0"

Offset 1230'-0"

Offset 1235'-0"

Offset 1240'-0"

Offset 1245'-0"

Offset 1250'-0"

Offset 1255'-0"

Offset 1260'-0"

Offset 1265'-0"

Offset 1270'-0"

Offset 1275'-0"

Offset 1280'-0"

Offset 1285'-0"

Offset 1290'-0"

Offset 1295'-0"

Offset 1300'-0"

Offset 1305'-0"

Offset 1310'-0"

Offset 1315'-0"

Offset 1320'-0"

Offset 1325'-0"

Offset 1330'-0"

Offset 1335'-0"

Offset 1340'-0"

Offset 1345'-0"

Offset 1350'-0"

Offset 13



# Program Cost

	Federal	State	TOTAL	PDR Estimate
<b>TOTAL</b>	<b>\$792,000</b>	<b>\$618,000</b>	<b>\$1,410,000</b>	<b>\$1,550,000</b>
<b>Funding Strategy (Sources):</b>	Federal Funding: Ferry Boats & Terminals FAST Act. State Funding: Appropriation 9095, State 57395000			



# Anticipated Schedule

Complete Final Design: February 2019

Project Advertisement: March 2019

Start Construction: April 2019

End Construction: December 2019



# Open Forum/Discussion

## QUESTIONS & GENERAL DISCUSSION



### Open Forum Protocol:

- Raise your hand
- State your name
- Speak clearly

### Next Steps:

- Complete final design
- Advertise the project to contractors
- Commence construction

### Meeting Adjourned:

- Thank you!