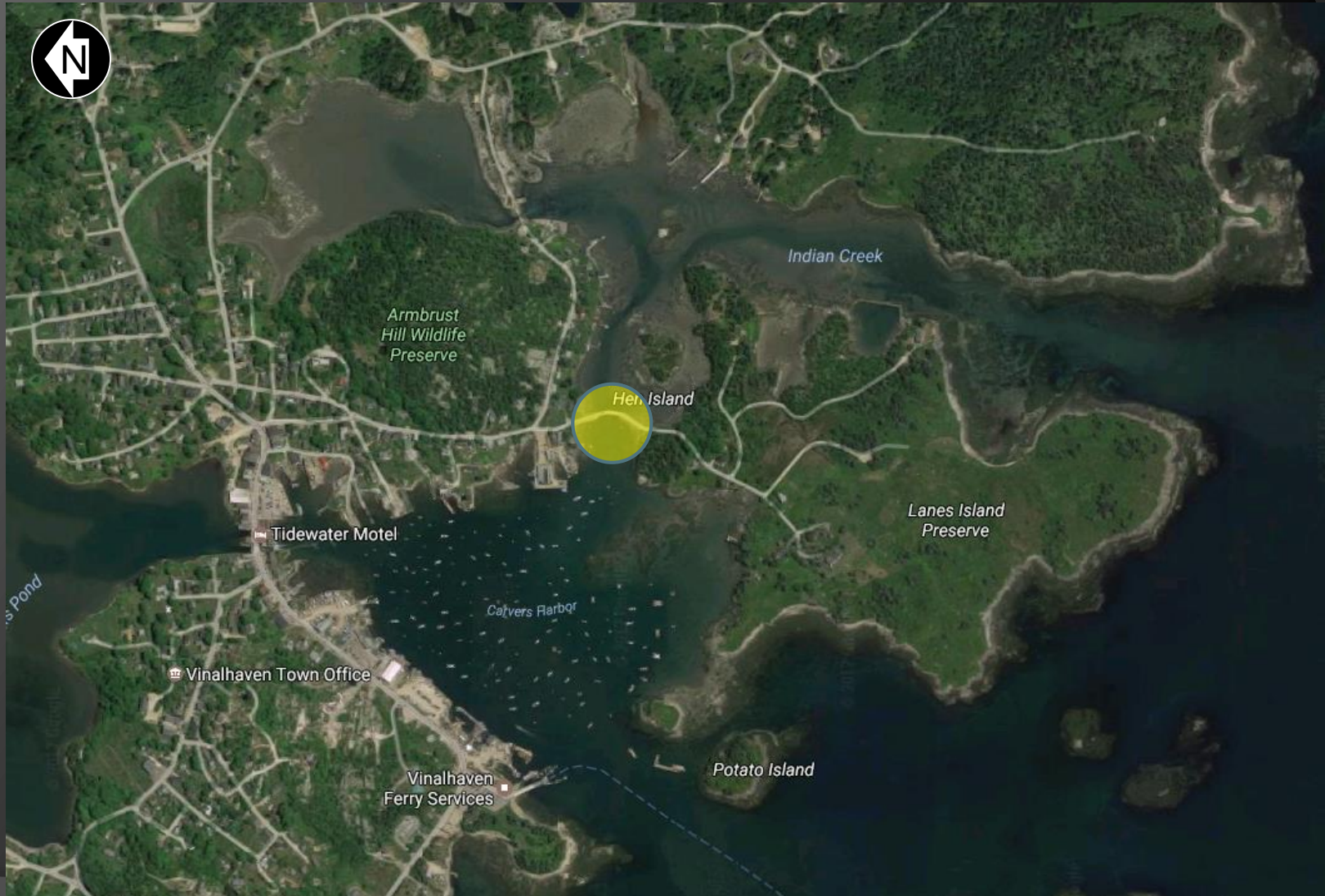


PRELIMINARY PUBLIC MEETING

LANE'S ISLAND BRIDGE

JUNE 27, 2017

Bridge Location



Background/Existing Conditions

- Bridge Built in 1954
- 100' Long, Seven Spans
- 14' Wide Single Lane, No Shoulders
- 112 Cars A Day
- Poor Condition
 - Sufficiency Rating 16.2
 - Superstructure Condition 5 (some spalling)
 - Substructure Condition 4 (some voids)
- Substandard Guard Rail

Existing Bridge



Existing Bridge



Existing Approaches

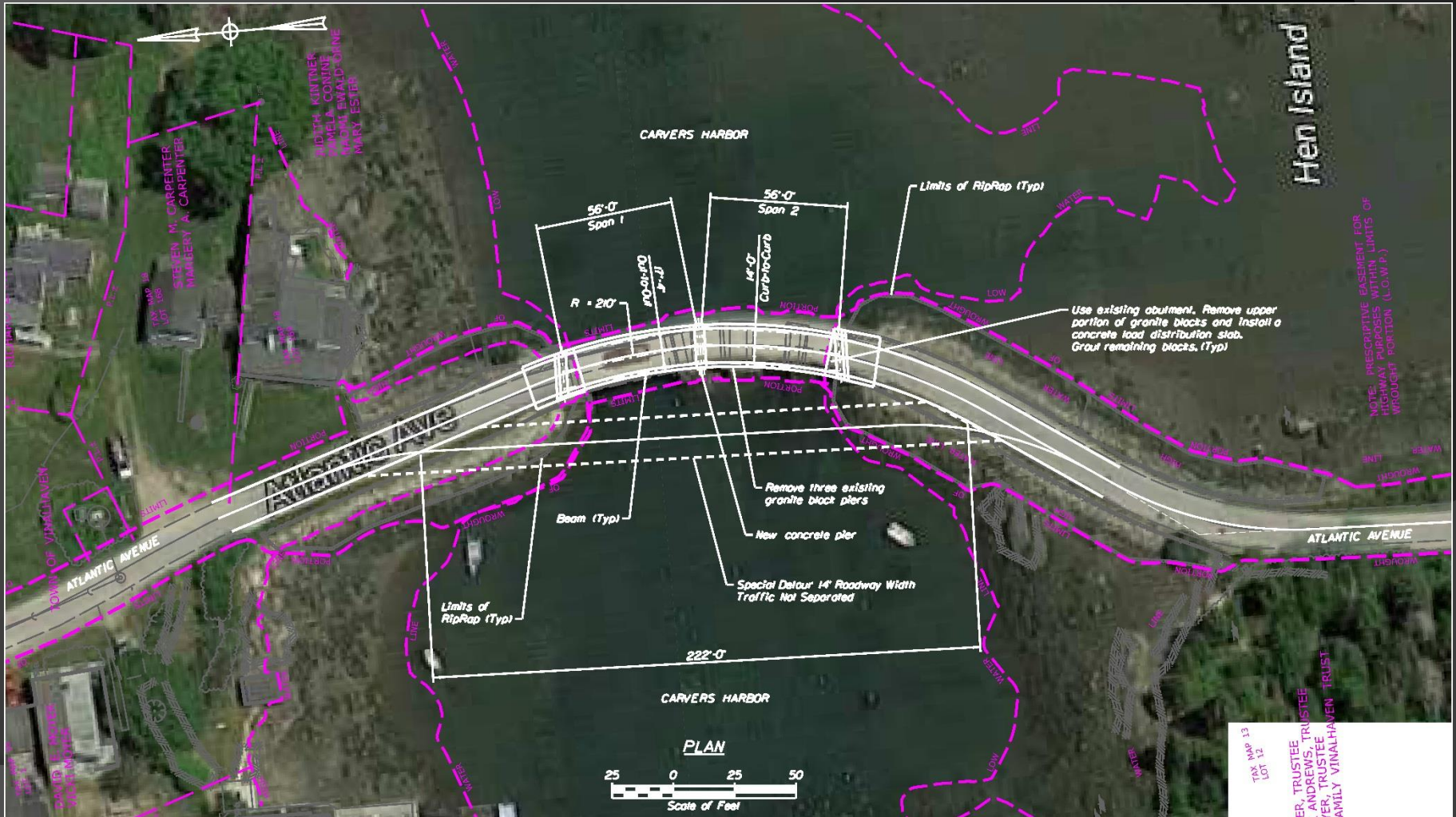


Possibilities

- ⦿ Do Nothing
 - Does not correct deficiencies
- ⦿ Superstructure Rehabilitation
 - Does not correct foundations
- ⦿ New Bridge
 - Existing alignment
 - New alignment

Alternatives

● New Bridge on Existing Alignment, Skewed



Schedule

- Finalize Preliminary Design Dec 2017
- Complete Final Design Aug. 2018
- Advertise Oct. 2018
- Construction 2019

Budget

● Cost Shared Federal / State

● Engineering \$150,000

● Right-of-Way \$15,000

● Construction \$1,200,000

● Construction Engineering \$150,000

Questions ?

CONTACT INFORMATION

Joel Kittredge

(207) 624-3550

joel.kittredge@maine.gov